

High Flow Air Dryer Module

20 SCFM • QUIET OPERATION

Description

The series 2042 high flow air dryer will handle up to 20 scfm at supply pressure of 80 to 125 psig. Using a solid state timer, three power valves are sequenced to provide the following features:

- Quiet operation – No large pressure surge during switching.
- Virtual pulse free output pressure – No significant pressure swing during switching.
- Three models rated at 10, 15 and 20 scfm respectively.

Construction is simplified and cost is reduced using an open frame assembly for this series. All electric components are housed in a small Nema 12/13 enclosure. Valves and desiccant tanks are plate mounted.

Specifications

Inlet Pressure – 80 to 125 psig

Maximum Inlet Temperature – +125°F

Dew Point – minus 50°F atmospheric at maximum rated flow; dew point decreases at flow rates less than maximum.

Medium – Clean oil-free compressed air.

Output Flow Capacity – 10, 15 or 20 scfm – See chart below.

Purge Flow – See chart below.

Air Connections – 1/2" NPT or 1/2" OD plastic tubing.

Mounting – Mount unit vertical and upright; six mounting holes.

Dimensions – 33" x 21" x 7" – See drawing page 16.

Electric Connections – Terminal strip inside enclosure.

Required Filtration – Prefilter – 5 micron

Coalescing filter – .01 micron

Weight – Approximately 60#.

Recommended Operation

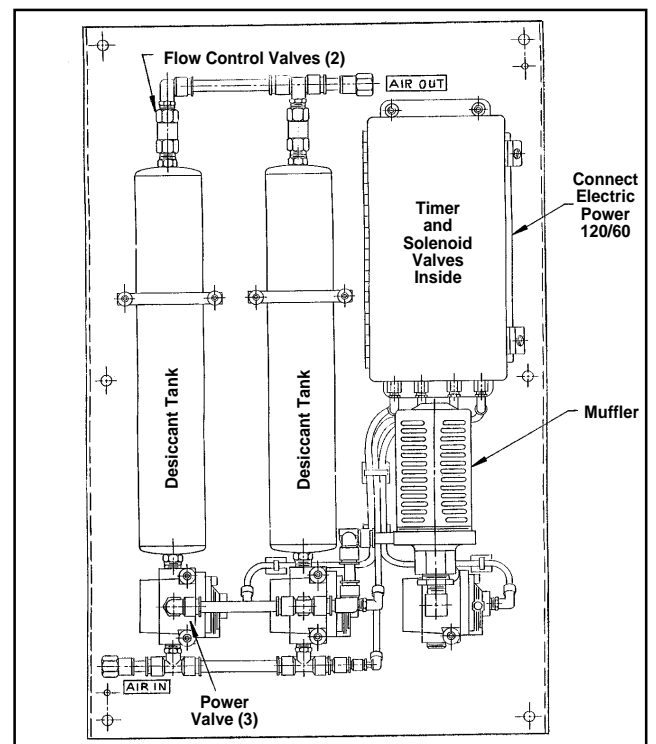
- The 2042 series air dryer has protected electrical connections and can be field mounted.
- Always provide clean air to the dryer. Use a prefilter (OKC-2046) to remove solid contamination and a coalescing filter (OKC-2047) to remove liquid water and oil.
- The dryer can be continuously operated.

Ordering Information

Part Number	Max Flow	Purge Flow	Atmos. Dew Point °F	Pressure Dew Point °F
	Rate (scfm) @ 80 psig	Rate (scfm) @ 80 psig		
OKC-2042-1	10	2	-50	-18
OKC-2042-2	15	3	-50	-18
OKC-2042-3	20	4	-50	-18



Open frame air dryer module can handle up to 20 scfm at 80 psig and deliver an output dew point of -50°F atmospheric.



Air dryer employs a solid state timer, three power valves and two tanks of desiccant to achieve low dew point.

PULSE FREE

Description

The series 2043 high flow air dryer system handles up to 20 scfm at supply pressure of 80 to 125 psig. Using a solid state timer, three power valves are sequenced to provide the following features:

- Quiet operation – No large pressure surge during switching.
- Virtual pulse free output pressure – No significant pressure swing during switching.
- Three models rated at 10, 15 and 20 scfm respectively.

The air dryer is housed in a Nema 12/13 enclosure and a prefilter and coalescing filter are attached externally. The system can handle substantial air flows without attracting attention or creating noise disturbances.

Specifications

Inlet Pressure – 80 to 125 psig

Maximum Inlet Temperature – +125°F

Dew Point – minus 50°F atmospheric at maximum rated flow; dew point decreases at flow rates less than maximum.

Medium – Clean compressed air.

Output Flow Capacity – 10, 15 or 20 scfm – See chart below.

Purge Flow – See chart below.

Air Connections – 1/2" NPT

Mounting – Mount unit vertical and upright; four mounting holes.

Dimensions – 36" x 24" x 7" – enclosure only – See drawing page 16.

Electric Connections – Terminal strip on timer sub-plate.

Filtration – Prefilter with auto drain – 5 micron

Coalescing filter with auto drain – .01 micron

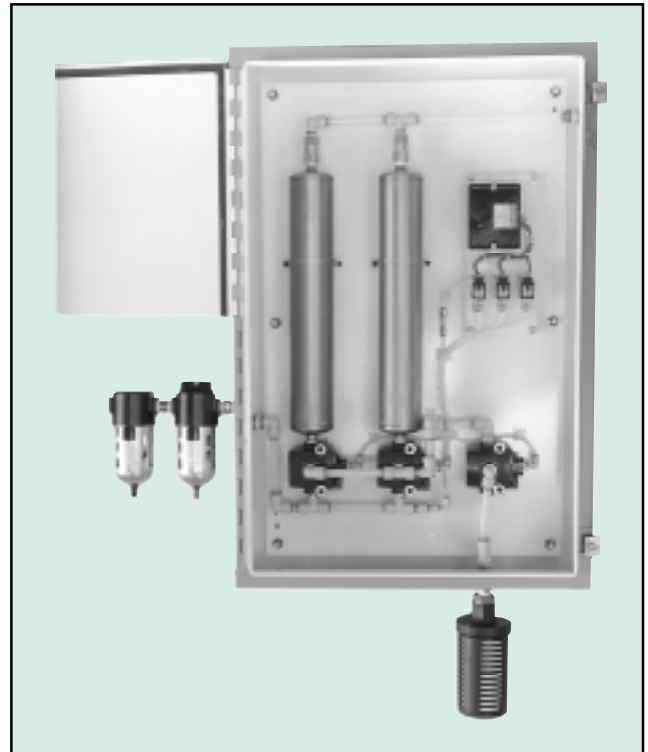
Weight – Approximately 120#.

Recommended Operation

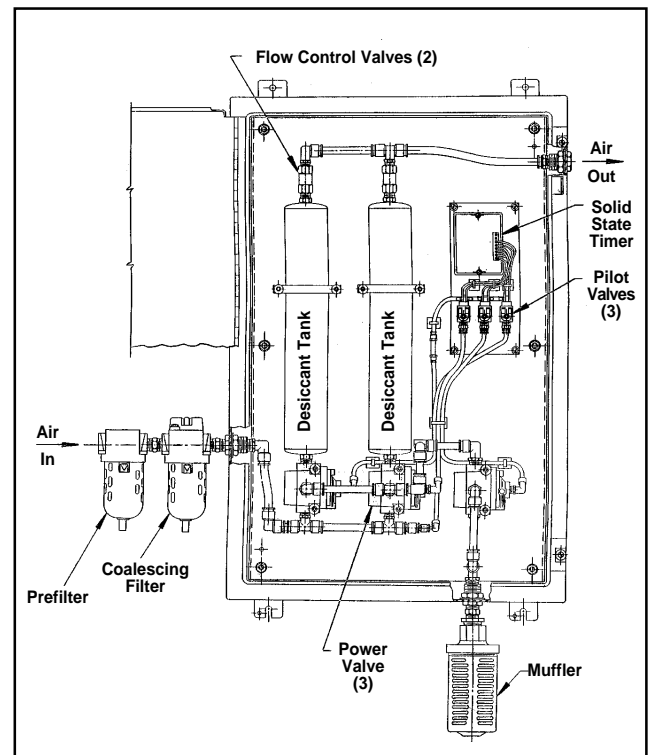
- The filters are equipped with automatic float drains. Make provision to collect the discharged liquid at a suitable location. There are 1/8" NPT connections at the bottom of each filter.
- The dryer system works best if the compressed air provided is pre-dried in a refrigeration type air dryer (35 to 50°F pressure dew point).
- The dryer can be continuously operated.

Ordering Information

Part Number	Max Flow	Purge Flow	Atmos. Dew Point °F	Pressure Dew Point °F
	Rate (scfm) @ 80 psig	Rate (scfm) @ 80 psig		
OKC-2043-1	10	2	-50	-18
OKC-2043-2	15	3	-50	-18
OKC-2043-3	20	4	-50	-18



External filters remove solids and liquids from compressed air. The dryer removes water vapor from the air.

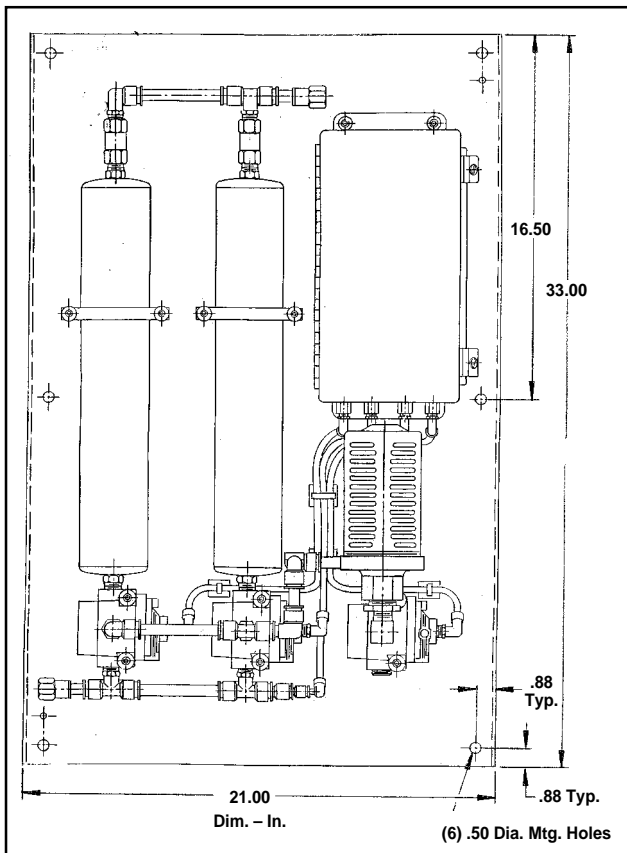


A solid state timer sequences the three power valves to assure quiet, pulse-free operation.

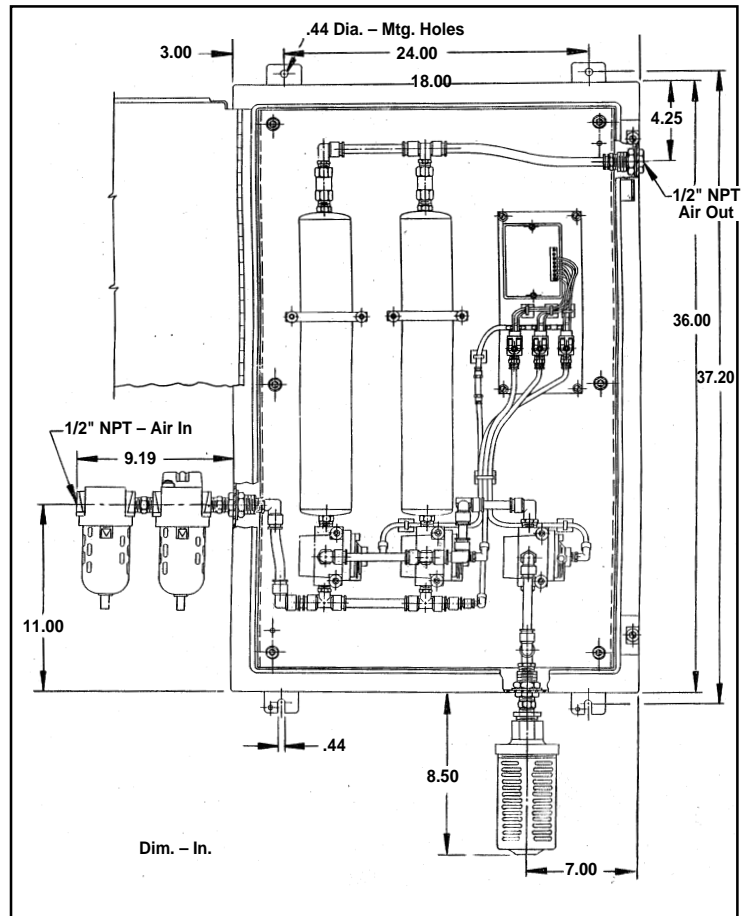
High Flow Air Dryers

DIMENSIONS

Module Series 2042



System Series 2043



Parts for High Flow Air Dryers

Description	Qty./Air Dryer	Part Number
Timer for 2042; 2043 (120/60)	1	OKC-1150-2
Solenoid Valve for 2042; 2043 (120/60)	3	OKC-2050-2
Check Valve for 2042; 2043	1	FFLC-2-BR
Flow Control Valve		
For 2042-1; 2043-1	2	Y6F-41-BR-DE
For 2042-2; 2043-2	2	Y6F-52-BR-DE
For 2042-3; 2043-3	2	Y6F-60-BR-DE
Muffler for 2042; 2043	1	OKC-2051
Desiccant Tank for 2042; 2043	2	OKC-2052
Power Valve for 2042; 2043	3	OKC-2049
Prefilter for 2043	1	OKC-2046
Prefilter Cartridge for 2043	1	OKC-732
Coalescing Filter for 2043	1	OKC-2047
Coalescing Filter Cartridge for 2043	1	OKC-733
Autodrain Assembly for 2043	2	OKC-734