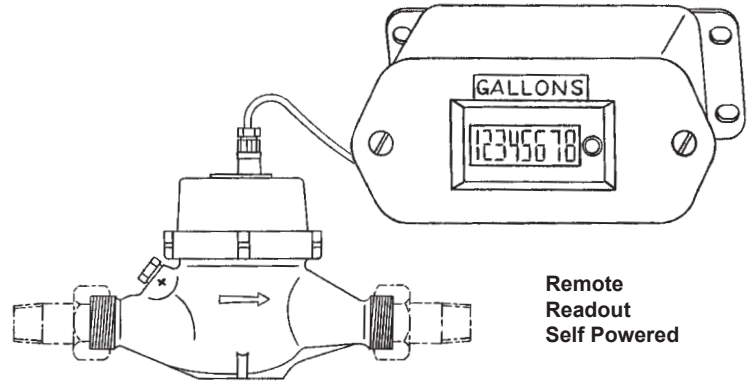


REMOTE READOUT

Description

The remote water totalizer system consists of a standard water totalizing meter that is adapted with a contact switch which provides one pulse per gallon; and a remote self powered electronic LCD eight digit display. No external electric power is required. Battery life for the remote register is 10 years.

The meter can be installed in a location not normally accessible and the remote readout conveniently located for easy observation. The readout can be up to 1000 feet from the flowmeter.



Flow Totalizer
with Couplings

Remote
Readout
Self Powered

Specifications

Maximum Pressure – 150 psig

Flow Accuracy ± 2% of reading

Readout – Self Powered • 10 year battery life
8 digit • 3/8" height

Maximum Temperature Cold Water Meter • 105° F
Hot Water Meter • 194° F

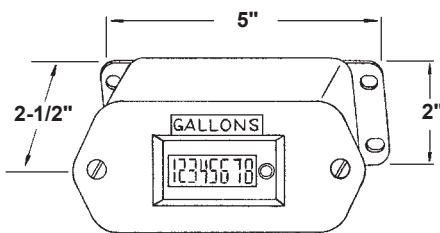
Meter Body – Bronze

Cable Length – 6 ft. standard
– can be extended to 1000 ft.

Catalog Numbers

	Part Number	Pipe Size (NPT)	Flow Rate - GPM		Readout
			Min.	Max.	
Cold Water Meter	OKC-1317-2	3/4"	.22	22	8 digit/gallons
	OKC-1317-3	1"	.44	52	8 digit/gallons
	OKC-1317-4	1-1/2"	.88	88	8 digit/gallons
	OKC-1317-5	2"	2.0	132	8 digit/gallons
Hot Water Meter	OKC-1318-2	3/4"	.22	22	8 digit/gallons
	OKC-1318-3	1"	.44	52	8 digit/gallons
	OKC-1318-4	1-1/2"	.88	88	8 digit/gallons
	OKC-1318-5	2"	2.0	132	8 digit/gallons

Remote Readout OKC-1319

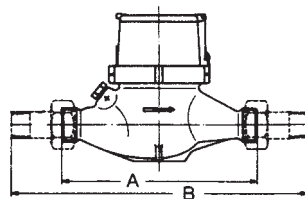


The remote readout is included with each totalizer. It is also available separately.

Remote Readout Only

- Catalog Number OKC-1319
- Operates on remote contact closure
- Self powered internal lithium battery - 10 year typical life
- 8 digits – 3/8" height
- Heavy duty enclosure

Dimensions



	3/4"	1"	1-1/2"	2"
A	Meter Only			
	7-1/2"	10-3/4"	12-5/8"	10-5/8"
B	With Couplings (MNPT)			
	12-5/8"	16-1/8"	18-1/2"	16-7/8"

Typical Pressure Drop Curve

